

# Max Clean Boo

SUNCKU-290DS

Operating manual



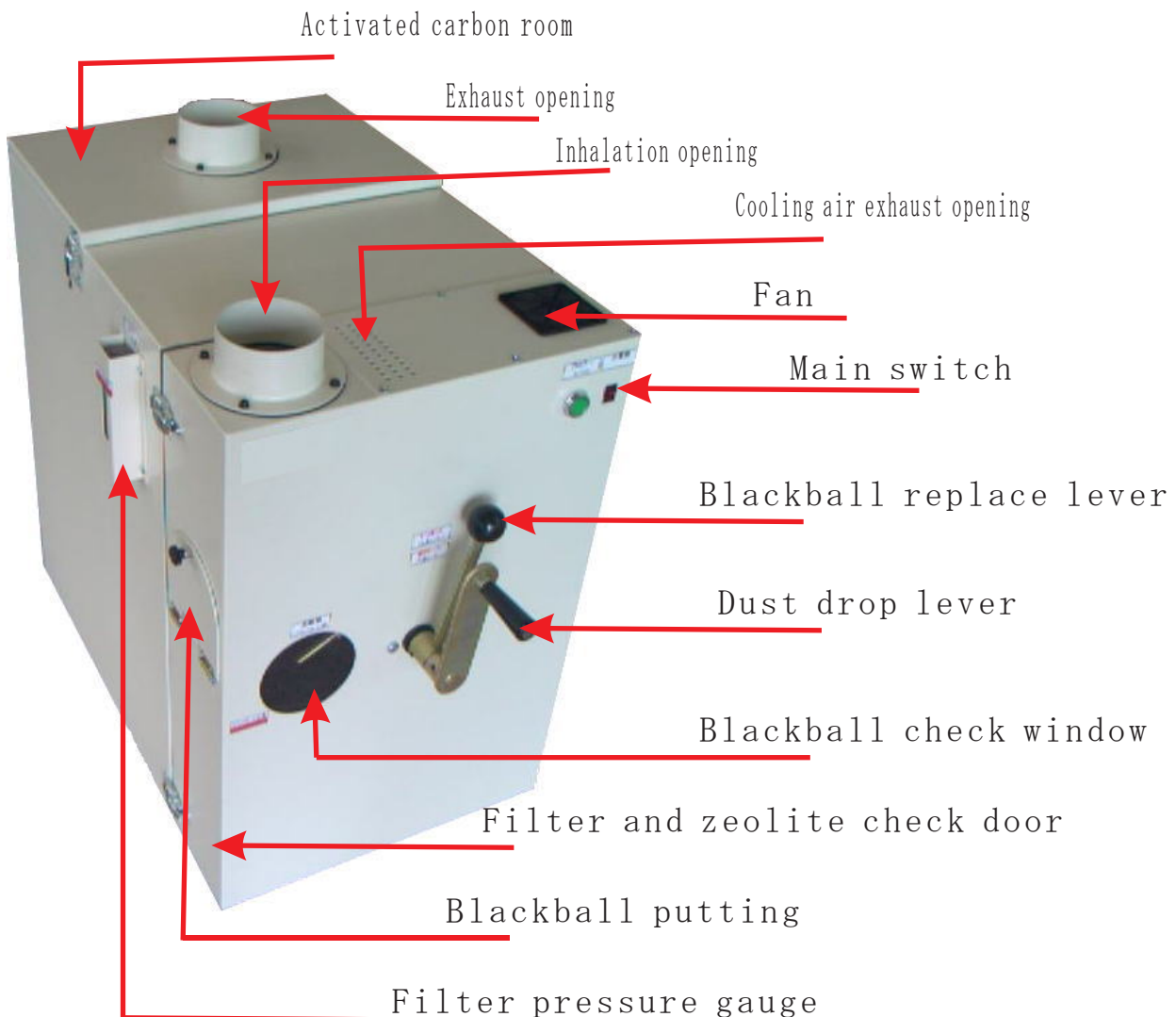
**Automatic translation by Excite**

<http://www.excite.co.jp>

R S D CO.,LTD.

Thank you for purchasing a deodorant machine max clean baud for this time. To use it for a long term safely without the breakdown, please read this manual carefully and use the Max Clean Boo correctly.

## 1. Name and specification of this machine



### Specification

Power supply : 100v 50/60Hz  
Power consumption : 290W  
Amount of wind : 3m<sup>3</sup>/min  
Static pressure : 6Kpa (at 20°C)  
Main body material : SS-400  
Painting : Printing painting  
Size : W450xD680xH700  
Weight : about 95kg

## 2. Installation

Please note the following item when you set it up.

- This product is for the room.
- Please do not close on the cooling air exhaust entrance of the cooler fan.
- Please set up the installation so that there is no Gatatski at the horizontal position.
- Please open the space (500mm or more) for maintenance in front of (switch side).
- The power supply is 100V single phase.

notice Please take the earth.

## 3. Confirmation before it drives

Are you set up correctly and horizontally?  
Is the earth taken?

Please put the master electrical switch, and confirm whether the cooler fan rotates with lighting the lamp when it is possible to prepare it.

Next, please turn on the blower driving switch and confirm the suck from the inhalation mouth.

Please connect the hose with the inhalation mouth.

## 4. The order of driver

Please put the power supply outlet.

Please put the master electrical switch.

Please turn on the blower driving switch.

## 5. Daily check

Please rotate the Chile drop lever without fail and do the Chile drop when work during a day is completed.

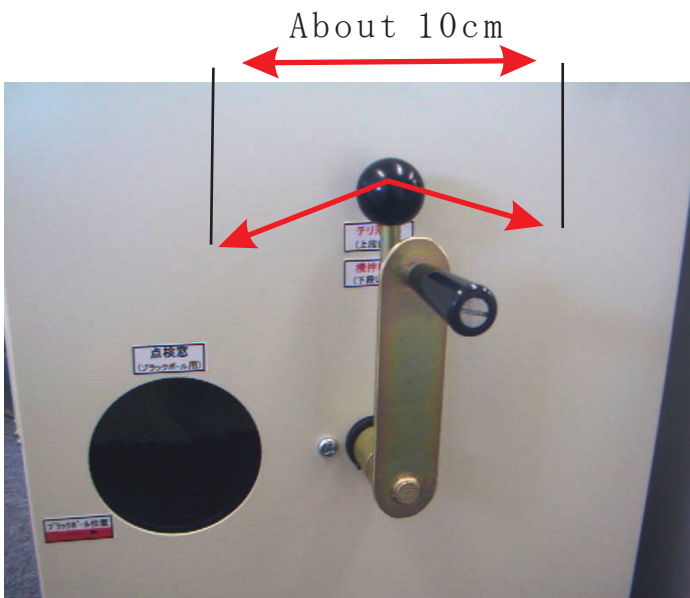


Please let me make the lever in this side by three rotations. (Clockwise)

3 rotations/day  
at the end of work

Please check once a week.

- Please move the black ball positional changing lever right and left.  
Please do whether they are two reciprocations right and left by about 10cm.



Once a week



- Confirmation of position of float with red filter pressure gauge.



Please confirm whether the float goes up to a red line.

When a red float doesn't fall even if the dust drop is done, the longevity of the filter is thought.

Please refer to the chapter of maintenance for details.

Check of black ball (Once a month)

- The position of the arrow is appropriate to the amount of a black ball.

Please replenish it when entering the state that won't be seen from the check window.



Once a month.

Please refer to the chapter of maintenance for the replenishment method.

Black ball proper position

# Chapter of maintenance

## 1. Exchange of zeolites

- The exchange timing of the zeolite is 100 hours.  
about once a month.

### Replacement procedure

Driving the deodorant machine is stopped.

The dust drop lever is made by three rotations and dust of the filter is dropped.

Please release Pattin of the filter and the zeolite check door and open.

※ Please open the door after it waits from one for two minutes after the drop of dust.

The zeolite disperses when the door is opened at once.

Please dust was brushed, and take out collected zeolites to the saucer with a special shovel.

※The zeolite disperses to surroundings when the saucer is drawn out.  
Amounts of the exchange once are four shovels. (1400g)  
About 2/3 of the saucers is a standard.

#### ! notice

When the zeolite is put too much, the volume raising to the filter cannot be likely to be done.

Please close the door after it turns it on, turn on the blower driving switch, and drive for about three minutes.

Please lightly flatten the zeolite with the shovel, close the door again if the door is opened again after driving the deodorant machine will be stopped in three minutes, and it waits during 1?2 minute and the zeolite remains more than the half in the saucer, and drive for three minutes.

※It naturally adheres to the filter by driving afterwards.



Zeolite saucer

## 2. Replenishment of black ball

- It is time when replenish of a black ball won't see from the black ball check window and became it.

Please replenish it as soon as possible when it is not sure to fall below a proper position, to see from the check window, and to become it.

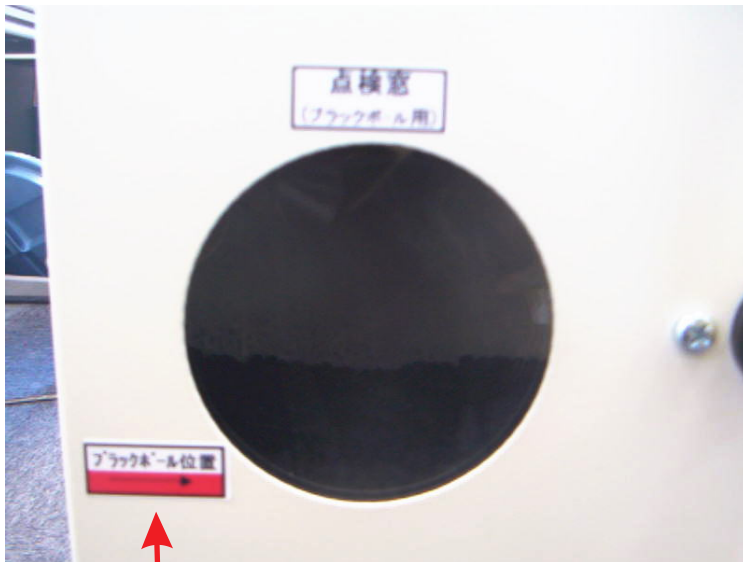
The standard of the amount of turning on once is one shovel(400g).

※The consumption frequency of a black ball is proportional to the use frequency of the black ball position or the food lever.

The replenishment standard is about once every about three months. Please do to the left, open the door, and turn on the switch of the black ball turning on entrance with a shovel.

※Please close the door firmly after it turns it on.

o



Please replenish a black ball as soon as possible when falling below a proper position.



The black ball turning on entrance switch is opened and doing and the turning on entrance are opened to the left.

### 3. Exchange of filters

- The filter and the zeolite check door are opened, and the butterfly screw two places of the upper part of the filter are removed, and is done to the left and the screw is removed.

The standard of the filter exchange is one year.  
(It differs according to the use frequency and handling.)

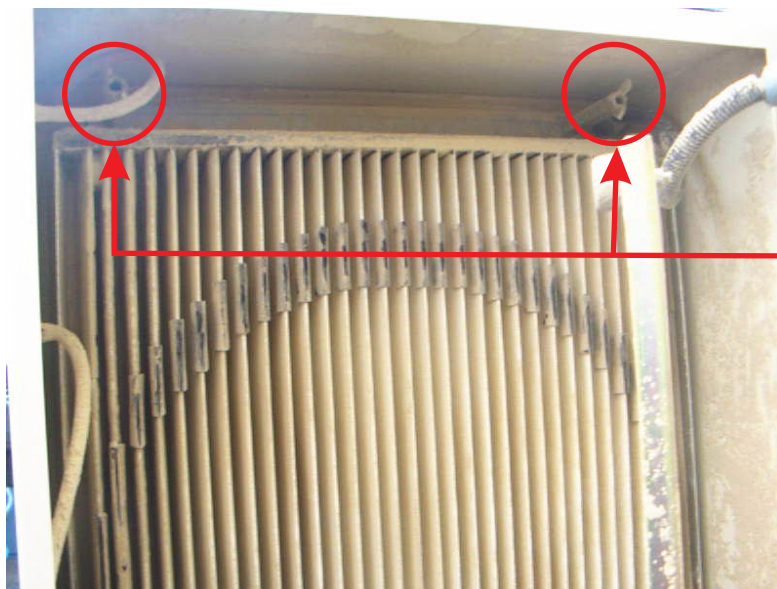
- ※ It is time when it doesn't recover even if the float reaches the upper bound, and the dust drop is done to the filter pressure gauge as a standard.

○ One-point before filters are exchanged

- After the drop of dust, the surface of the filter is confirmed.  
Please sweep the surface with a soft brush etc. when dust adheres to the surface of the filter.  
Please do a prescribed again driving if the dust that sticks to the surface of the filter can be taken, and the surface of the skin with a white filter comes into view.  
In addition, it is possible to repeat and to drive.

! notice

If zeolites have been exchanged regularly and correctly, the filter can be used for a long term.



Butterfly screw

## 4. Other notes

The sucking force has decreased though the float with a red filter pressure gauge doesn't go up.

Measures

- Please let me four going back and forth of the black ball positional changing lever from three.

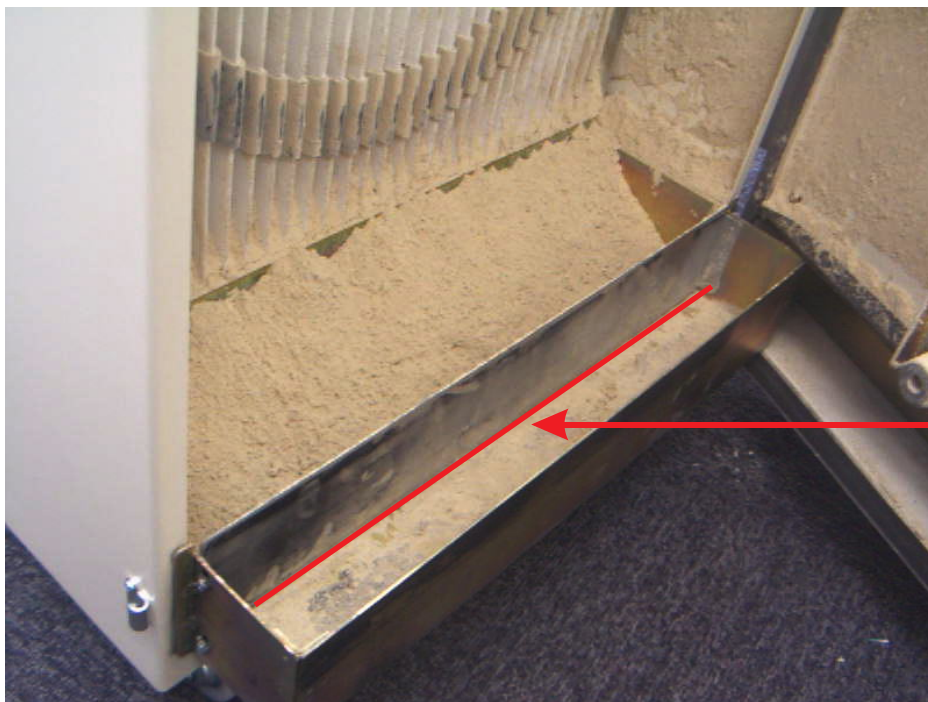


The sucking force doesn't change.

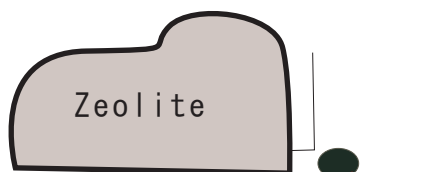
- Open the filter and the zeolite check door,

(A) There is a possibility that dust has collected in the space under the middle board of the zeolite saucer. Please clean it with toothpick etc.

o



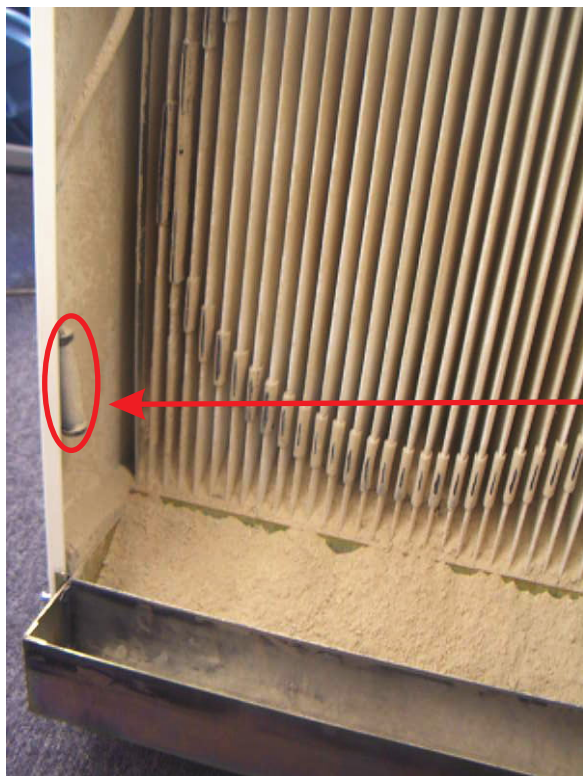
Space under the middle board



Dust might collected in this part.

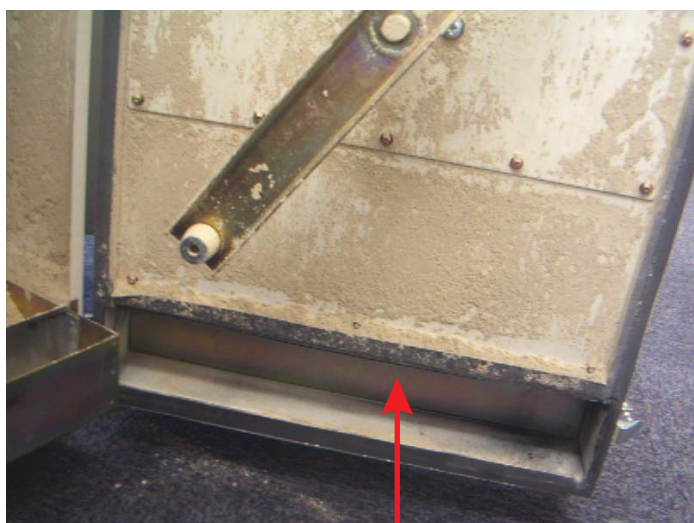


The float of the filter pressure gauge doesn't fall though the sucking force has not decreased.  
The filter for the pressure gauge is built into the main body filter room.  
Please clean the surface of the filter with the brush etc.  
The filter for the pressure gauge is taken out, and moreover, it is of washing in clear water.



Filter for pressure gauge

Please check dust and the dust saucer of a black ball when you exchange zeolites.  
Please remove the dust collected in the dust saucer.



There is a saucer in the interior from the entrance.  
Please put the hand in the space in the upper part of the saucer, and draw out the saucer.

Please push the saucer into the interior firmly after the cleaning ends.  
The door doesn't close when the installation is improper.

Return method when blacking out

It comes not to return in consideration of the safety when blacking out automatically.

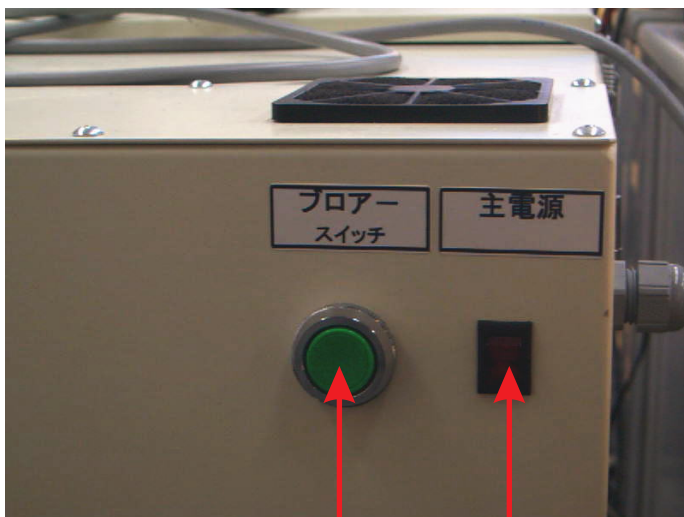
Please do restart when it blacks out according to the following procedure.

1. Please push the blower button, and put it into the halt condition
2. Please turn off the master switch.
3. Please turn on the master switch after it waits for ten seconds or more. ※
4. Please turn on the blower switch.

Operation begins.

。

※) The safety device has not been returned when doing within ten seconds to turning on the master switch and do over again from 1.,



Master switch

blower button





